

SUCTION AND DRAINAGE SYSTEMS



The Future of
Supply Chain

 **PREMIER** | Contracted Supplier

NOW
I N T E R A C T I V E S

FDA REGISTERED PRODUCTS



MADE IN TURKEY



Premier Contract Number
Suction Canisters, Yankaeurs,
& Tubing
ES - NS - 1833

THE FUTURE OF SUPPLY CHAIN IS NOW

VISION

To become the largest and most-trusted Black-owned and woman-owned, sourcing, manufacturing, and distribution company in the world that expands opportunities for a growing diverse workforce.

MISSION

NOW Interactives aims to disrupt the global supply chain industry by leveraging the Buy American Act and Trade Agreement Acts to source, produce and distribute products through innovative channels and trade routes that reach our customers quicker than competitors.

PASSION

NOW Interactives is passionate about educating and creating equitable opportunities within the global supply chain industry for the Black and brown communities, while being a trusted diversity supplier for our valued partners.

OUR STORY

Founded in 2015, NOW Interactives is a certified minority-owned and woman-owned sourcing, manufacturing and distribution company based in Miami, FL, with a diverse team spread across the US and Europe. NOW boasts a company full of resourceful problem solvers, savvy salespeople, and an astute customer service team that produce effective solutions for each client, without compromising on quality, service, or integrity.

Trusted by government agencies, retailers, hospitals, and private corporations worldwide, NOW Interactives disrupts the supply chain industry

by leveraging the Buy American Act and Trade Agreement Acts to source, produce, and distribute products through innovative channels and trade routes that reach our customers quicker than competitors. Offering a vast list of products from medical supplies and cleaning solutions to lithium-ion material and electric vehicle batteries, NOW Interactives is constantly expanding product offerings to serve a growing client base in a changing world—where resources have become scarce, and demand has swelled.

NOW is proud to be DAPA certified, FDA registered, GSA approved, and hold over 8 minority and small business certifications, which position us within the private and government sector as a premiere diversity supplier. We give ourselves the competitive edge by maintaining a highly experienced and diverse team, which allows us to compete with some of the country's top suppliers to serve the US military, Walgreens, and Baptist Health among others. NOW's success is rooted in commitment to our core values that emanate within our team and resonate with our valued clients and partners, serving as the backbone for our continued growth.

Ethics and Compliance – NOW Interactives leverages Buy American Act (BAA) and Trade Agreement Acts (TAA) to source, produce, and supply products through innovative channels and trade routes. As an FDA registered and GSA approved company, NOW Interactives is committed to only working with factories and vendors that are also compliant to uphold the integrity of the business and provide the best products and solutions for our customers.

SUCTION SYSTEMS

Aspiration Bags and System Properties

SYSTEM ADVANTAGES

- Suction Liners provides the protection from possible infections, which causes from hospital ambience.
- During working of user personnel and crew, provides easy and practical application.
- It has easy connection and assembly.
- When it fills, it's easy to change.
- It removes spillage and springing risks.
- It helps to protection of hospital hygiene.
- It provides advantage to destroy controlled medical waste.
- Due to its closed system, it prevents the spread of odor to the other departments.
- Both operation and anaesthesia crews can use it during the surgical operation.
- Generally it can be use similar liquid suction processes which has vacuum sources.

SUCTION LINER SPECIFICATIONS

- No contact with patient.
- Raw material and cover system are made of durable plastic.
- It's capacity is optional and 1500, 2000, 3000 ml.
- Liners are fl exible and sole part is fl at shaped.
- Suction end of patient port has anti-refl ux valve, which prevents the back fl ow.
- It has a special fl ter in vacuum suction end, which prevents the transition of bacterial and virus and stop the suction when liner fl lled.
- It has a cover system, which closes all the ports at the end of the process.
- It includes 1,8 m patient suction tube for suction process from the patient.
- It contains 2 pieces rubber plastic 1 piece kapkon connector for provide the connection between patient and vacuum source.
- Aspiration Bag has wide sample port, which provides the protection of solid samples received similar bone and tissue samples from arthroscopy, endoscopy etc applications.

ADDITIONAL MATERIALS

- Gelling : It provides the solidifi cation of liner contained liquid by gelling.
 - Antifoam : It prevents the foaming of suctioned liquid.
 - Disinfectant: It provides the disinfection of suctioned liquid.
- Additives are optional.

CANISTER SPECIFICATIONS

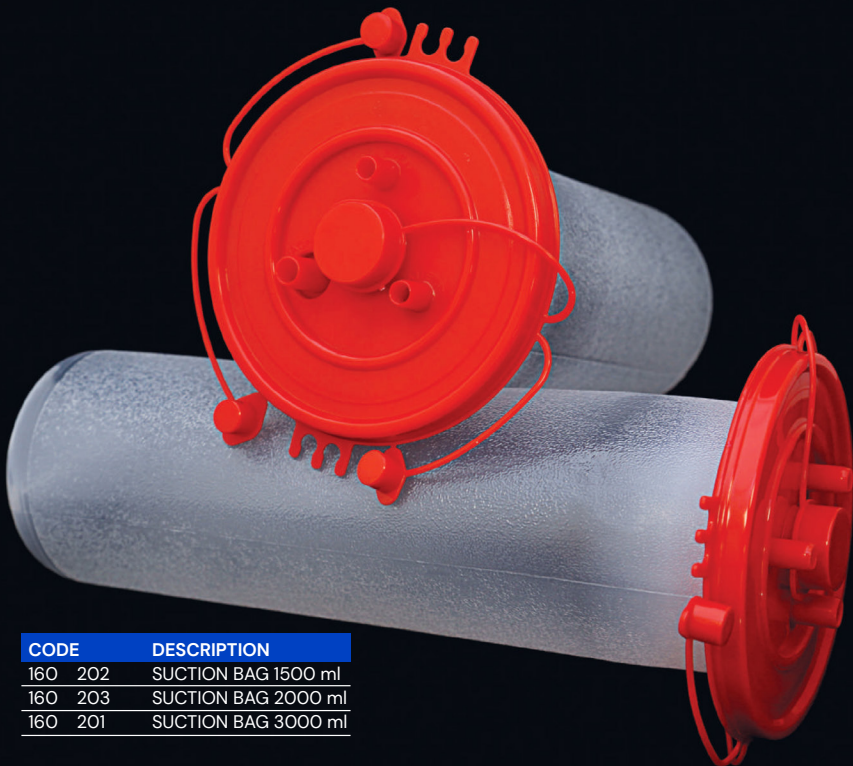
- It has three kinds of canisters, which capacities are 1500 ml, 2000 ml, 3000 ml .
- Canister is policarbonat material durable for unexpected impact.
- It can be autoclavable up to 121° celcius degree.
- For easy bag handling, vacuum switch (on-off) valve is available on canister.
- It can be adapt for central vacuum system and portable suction devices easily.
- It can be adapt to wall and rail.

CONNECTION SPECIFICATIONS

- It can be connect with mobile carriage system and can be make 1x2 or 2x2 canister connection in surgery operation rooms.
- Connection done, at least 2 canister can be usable in same time on mobile carrier.
- In double system, 1 canister can be used for surgery operation team, another one can be used for anaesthesia team.
- During the parallel connection of 4 canister, all the canister stay in active position.
- Canisters can be connected as serial.
- During Intensive Care Units and services, it can be adapt to walls and on any system.
- During the use of Mobile Carriage Systems, connection can be made by 2,5 m-4 m tubes between central vacuum system and canister. In special cases, solution provides according to inquiries.
- In case of montage to the wall, it uses 1-1,8 m tubes.

SUCTION SYSTEMS

Aspiration Bags and System Properties



CODE	DESCRIPTION
160 202	SUCTION BAG 1500 ml
160 203	SUCTION BAG 2000 ml
160 201	SUCTION BAG 3000 ml

SUCTION SYSTEMS

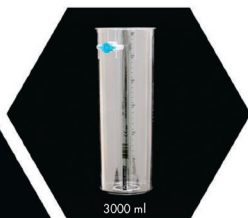
Canisters



1500 ml



2000 ml

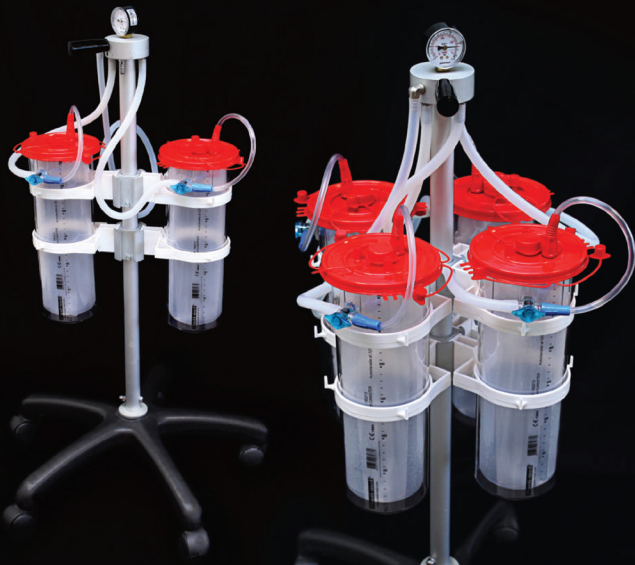


3000 ml

CODE	DESCRIPTION
160 211	SUCTION CANISTER 1500 ml
160 212	SUCTION CANISTER 2000 ml
160 213	SUCTION CANISTER 3000 ml

SUCTION SYSTEMS

Mobile Trolleys



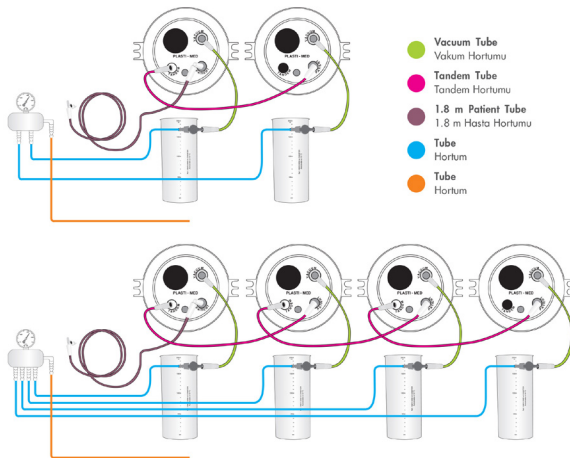
CODE	DESCRIPTION
160 233	SUCTION BAG TWO CANISTER WITH TROLLEY -1500 ml
160 234	SUCTION BAG FOUR CANISTER WITH TROLLEY -1500 ml
160 235	SUCTION BAG TWO CANISTER WITH TROLLEY -2000 ml
160 236	SUCTION BAG FOUR CANISTER WITH TROLLEY -2000 ml
160 231	SUCTION BAG TWO CANISTER WITH TROLLEY -3000 ml
160 232	SUCTION BAG FOUR CANISTER WITH TROLLEY -3000 ml

SUCTION SYSTEMS

Mobile Trolleys

- Suitable aspiration bag is placed in canister. Vacuum tube is mounted to the shut on-off valve on canister. The other side of vacuum tube is mounted to the vacuum port on the lid.
- Tandem and Patient port exist on aspiration bag are connected to each other with Tandem tube.
- 1.8 m and/or 3.7 m Patient tube is placed to Patient port exit on aspiration bag.
- Tubes come from vacuum distributor are mounted to the other end of shut on-off valve on canister.
- Central tube is mounted to the outer connection part of vacuum distributor and system is ready to use.

Tandem serial connection manual (2canisters)



SUCTION SYSTEMS

Operating Room Installation



SUCTION SYSTEMS

Wall Mounted Installation



SUCTION SYSTEMS

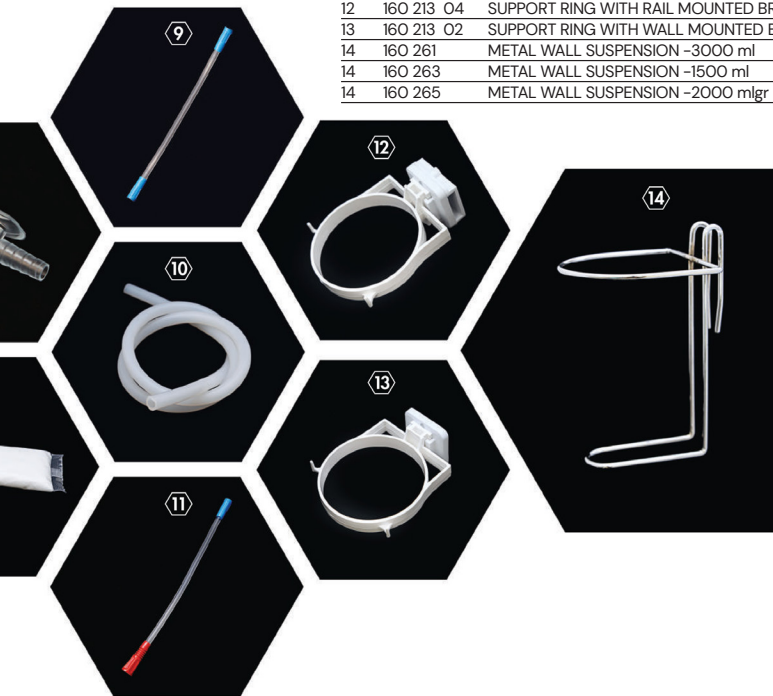
Accessories

NO	CODE	DESCRIPTION
1	160 213 09	SUPPORT RING WITH RAIL MOUNTED BRACKET 46 mm
2	160 213 01 1	SUPPORT RING WITH RAIL MOUNTED BRACKET 32 mm
3	160 271	ALUMINIUM CLAMP BRACKET
4	160 322	SUCTION BAG TUBE 1.8 m WITH KAPKON CONNECTOR
5	160 221	ASPIRATION SYSTEM FILTER
6	160 221-B	ASPIRATION SYSTEM FILTER
7	160 404	KAPKON CONNECTOR
8	160 210 01	GELLING POWDER IN FLUID SOLUABLE BAG -15 gr
9	160 231 05	TANDEM CONNECTION TUBE



SUCTION SYSTEMS Accessories

NO	CODE	DESCRIPTION
10	A AST 036 2	ASP BAG CONNECTION TUBE (8x13 mm)
11	160 231 02	VACUUM TUBE
12	160 213 04	SUPPORT RING WITH RAIL MOUNTED BRACKET
13	160 213 02	SUPPORT RING WITH WALL MOUNTED BRACKET
14	160 261	METAL WALL SUSPENSION -3000 ml
14	160 263	METAL WALL SUSPENSION -1500 ml
14	160 265	METAL WALL SUSPENSION -2000 mlgr



SUCTION SET

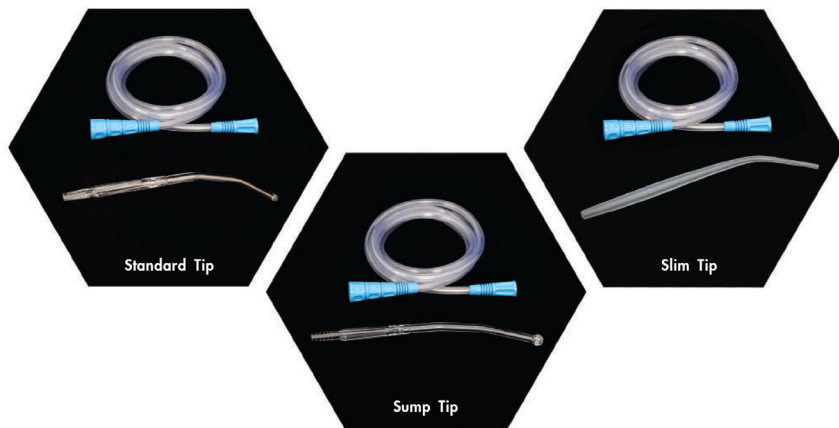
Yankauer Suction Handle

Yankauer Suction Handle	Standard Tip	Sump Tip	Slim Tip	Single Piece	Vacuum Control
160 153	✓			✓	✓
160 163	✓			✓	
160 154		✓		✓	✓
160 164		✓		✓	
160 173			✓	✓	✓
160 174			✓	✓	



SUCTION SET

Yankauer Suction Handle



Yankauer Suction Handle	Standard Tip	Sump Tip	Slim Tip	Single Piece	Vacuum Control
160 153	✓			✓	✓
160 163	✓			✓	
160 154		✓		✓	✓
160 164		✓		✓	
160 173			✓	✓	✓
160 174			✓	✓	

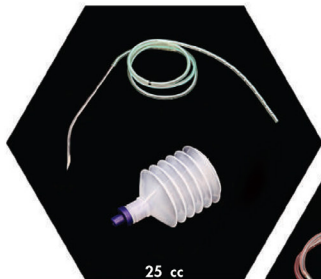
DRAINAGE SYSTEMS

Wound Drainage Set



DRAINAGE SYSTEMS

Wound Drainage Set



Mini 25 cc	6 ch		8 ch		10 ch	
Single Trocar	103 406		103 408		103 410	

200 cc	8 ch	10 ch	12 ch	14 ch	16 ch	18 ch
Single Trocar	103 208	103 210	103 212	103 214	103 216	103 218
Double Trocar	103 308	103 310	103 312	103 314	103 316	103 318

400 cc	8 ch	10 ch	12 ch	14 ch	16 ch	18 ch
Single Trocar	103 008	103 010	103 012	103 014	103 016	103 018
Double Trocar	103 108	103 110	103 112	103 114	103 116	103 118

DRAINAGE SYSTEMS

Wound Drainage Set



DRAINAGE SYSTEMS

Wound Drainage Set

CODE	DESCRIPTION
103 701	WOUND DRAINAGE RESERVOIR SILICONE / 200 cc
103 704	WOUND DRAINAGE RESERVOIR PVC / 200 cc
103 703	WOUND DRAINAGE RESERVOIR SILICONE / 400 cc
103 702	WOUND DRAINAGE RESERVOIR PVC / 400 cc

CODE	DESCRIPTION
103 507	WOUND DRAINAGE SET SILICONE / 200cc FLAT 7 mm
103 510	WOUND DRAINAGE SET SILICONE / 200cc FLAT 10 mm
103 513	WOUND DRAINAGE SET SILICONE / 200 cc FLAT 13 mm
103 657	WOUND DRAINAGE SET PVC / 200 cc FLAT 7 mm
103 660	WOUND DRAINAGE SET PVC / 200cc FLAT 10mm
103 673	WOUND DRAINAGE SET PVC / 200cc FLAT 13 mm

CODE	DESCRIPTION
103 527	WOUND DRAINAGE SET SILICONE / 400 cc FLAT 7 mm
103 530	WOUND DRAINAGE SET SILICONE / 400 cc FLAT 10 mm
103 533	WOUND DRAINAGE SET SILICONE /400 cc FLAT 13 mm
103 607	WOUND DRAINAGE SET PVC / 400 cc FLAT 7 mm
103 610	WOUND DRAINAGE SET PVC / 400cc FLAT 10mm
103 613	WOUND DRAINAGE SET PVC / 400cc FLAT 13 mm

DRAINAGE SYSTEMS

Wound Drainage Set



SILICONE ROUND DRAIN

CODE	TYPE
103 715	15 ch
103 718	18 ch
103 721	21 ch
103 722	22 ch
103 724	24 ch
103 727	27 ch
103 730	30 ch

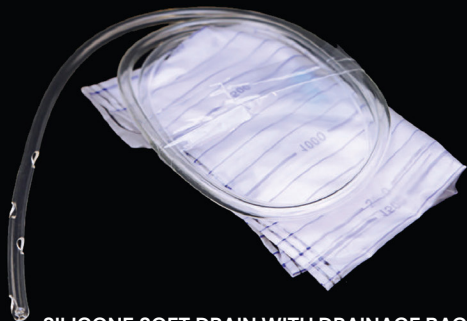
FLAT DRAIN (SILICONE)

CODE	TYPE
103 705	5 ch
103 707	7 ch
103 710	10 ch
103 713	13 ch



DRAINAGE SYSTEMS

Wound Drainage Set



SILICONE SOFT DRAIN WITH DRAINAGE BAG

CODE	TYPE
103 812	12 ch
103 814	14 ch
103 815	15 ch
103 816	16 ch
103 818	18 ch
103 820	20 ch
103 821	21 ch
103 822	22 ch
103 824	24 ch
103 826	26 ch
103 827	27 ch
103 828	28 ch
103 830	30 ch

PVC SOFT DRAIN WITH DRAINAGE BAG

CODE	TYPE
101 010	10 ch
101 012	12 ch
101 014	14 ch
101 015	15 ch
101 016	16 ch
101 018	18 ch
101 020	20 ch
101 021	21 ch
101 022	22 ch
101 024	24 ch
101 026	26 ch
101 027	27 ch
101 028	28 ch
101 030	30 ch





 PREMIER[®] Contracted Supplier

The Future of Supply Chain is NOW

+1 954 288 5228

www.nowinteractives.com

